



HIV HEALTH SERVICES UPDATE

BILL BLUM

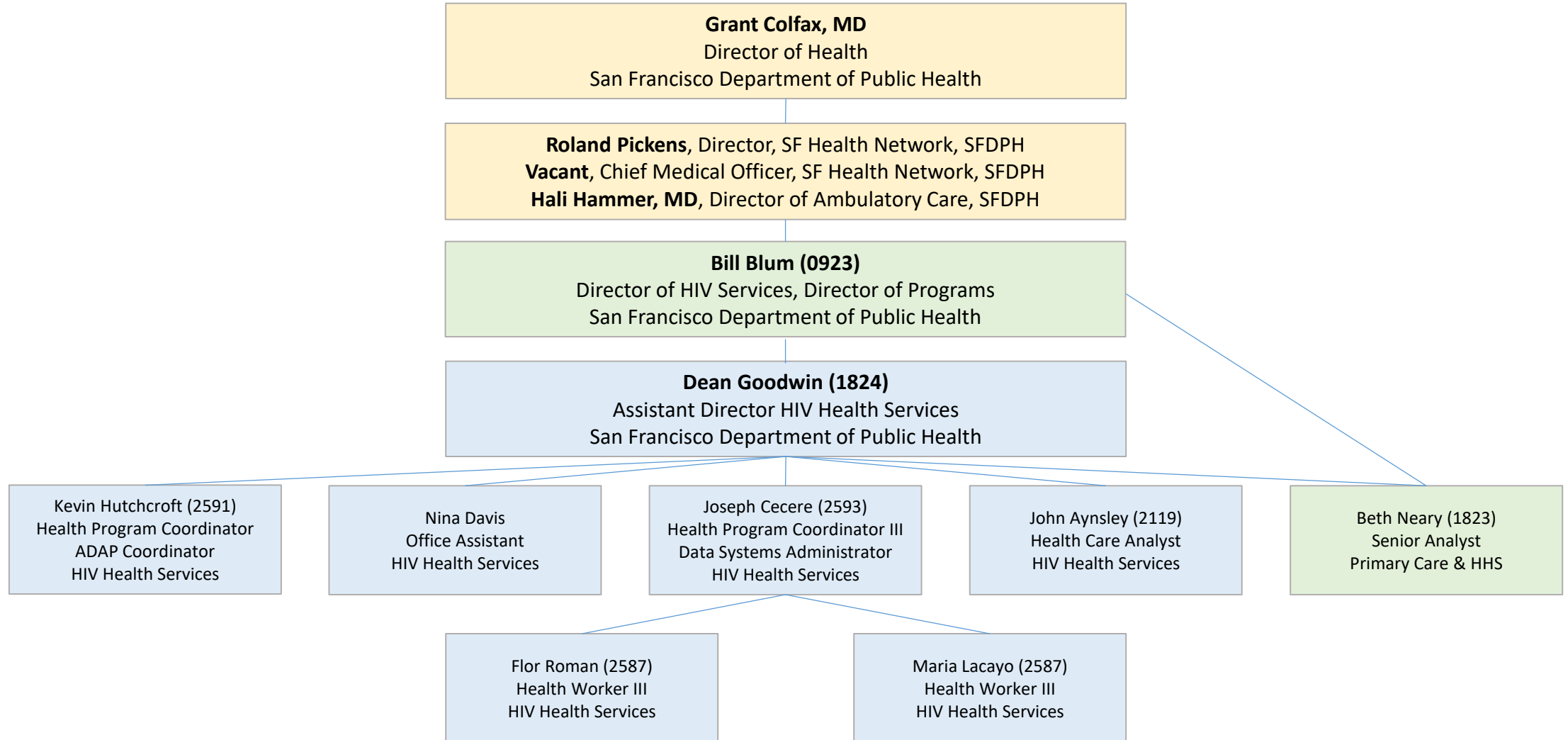
DIRECTOR OF HIV HEALTH SERVICES

San Francisco Department of Public Health

October 15, 2019

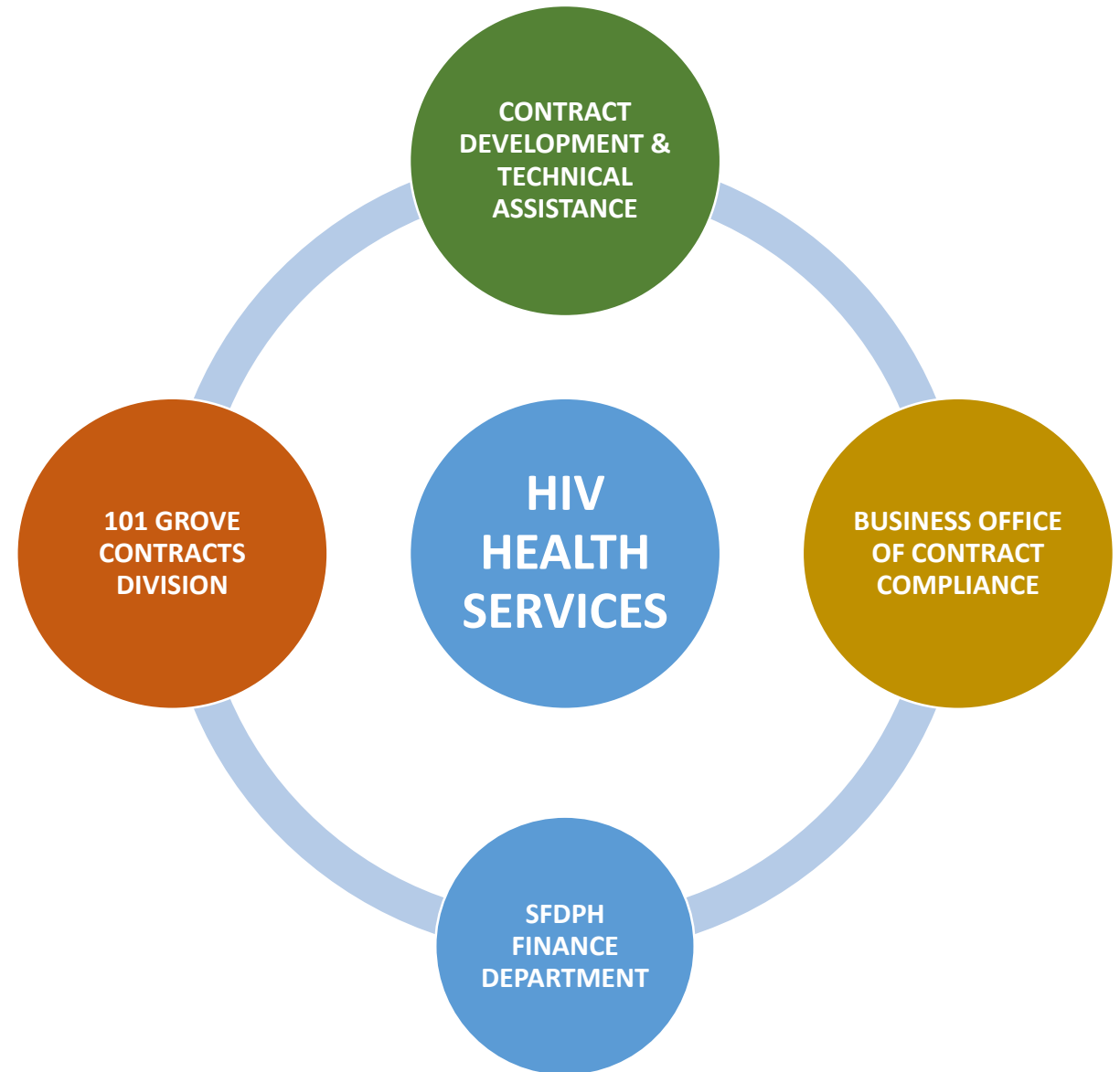


SFDPH – HIV HEALTH SERVICES – ORGANIZATIONAL CHART



SFDPH – HIV HEALTH SERVICES – OVERVIEW

- **HIV Health Services** is located at **25 Van Ness Avenue, 8th Floor**
- Serves **low income** and **severe need** populations
- **HHS** serves as the grantee for Part A, Part B, Part C, GTZ, and SFGF.
- Total of **65 contracts/MOUs** for 79 programs within 42 different CBOs, UCSF sections, or DPH
 - **HHS** has **40 contracts** supporting **58 separate programs** with **26** different **Non-Profit Community-Based Organizations**
 - There are another **10 contracts** for **12 programs** within **5 different divisions** of **UCSF**
 - There are additionally **15 MOU** supporting **18 HHS-funded programs** within **11 different units and clinics** of **SFDPH**



SFDPH – HIV HEALTH SERVICES – OVERVIEW

San Francisco EMA HIV COMMUNITY PLANNING COUNCIL

Serving Marin, San Francisco and San Mateo Counties

- Recent **merger** of **HIV Health Services Planning Council** and the **HIV Prevention Planning Council**
- **Meetings** occur **monthly**
- **HHS** and **Population Health** have representation as **Government Co-Chairs**
- **HIV Community Planning Council** has **50** appointed seats for the full council, **4** committees, **2 to 4** working groups
- **Ryan White** requires community planning of **prioritization** and **allocation** of funding
 - Occurs annually

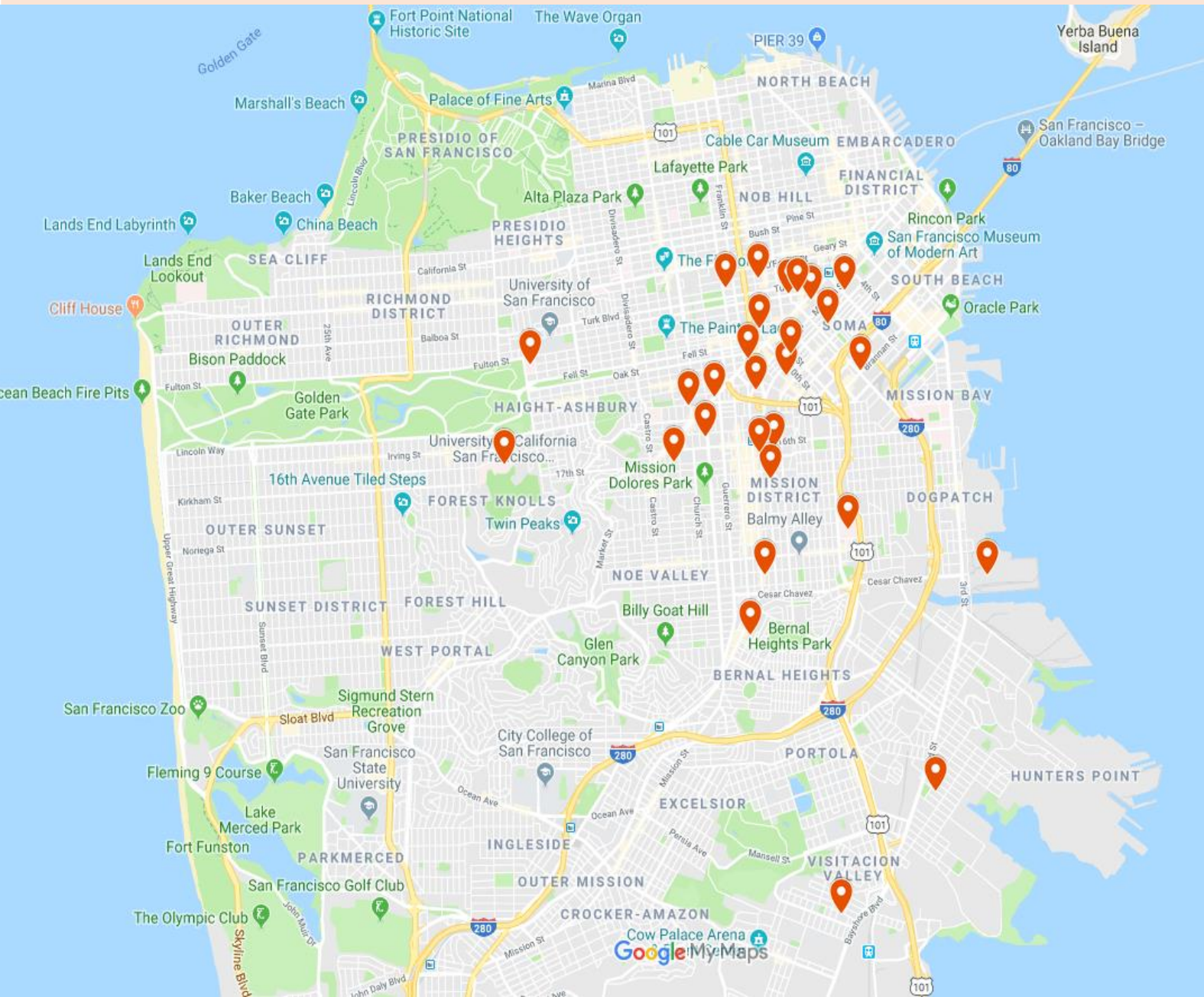


- HRSA/HAB** has specific **conditions of award** that are due **annually**. These represent a **substantial administrative burden** and admin expenses are capped at **10%** of total award.
- Clients are **assessed** every **six months** for **residence status**, **poverty level** and **other eligibility**.

HHS has **29** **standardized objectives** and **129** **unique objectives** relating to **all service categories**, **contractors**, and **MOU** to meet **HAB requirements**.

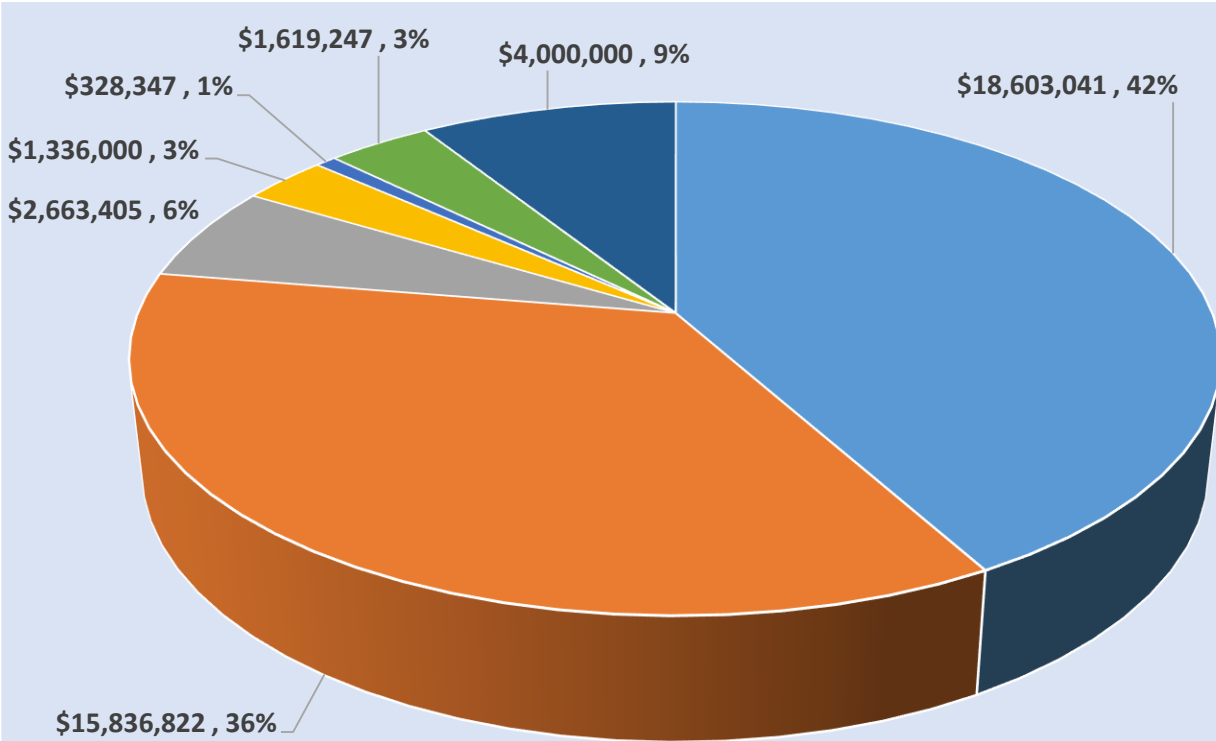
Performance objectives are monitored **annually** by **BOCC** and are **routinely updated** to reflect new **standards of care** and **changes in service delivery**.

SFDPH – HIV HEALTH SERVICES – MAP OF SAN FRANCISCO SERVICE PROVIDERS

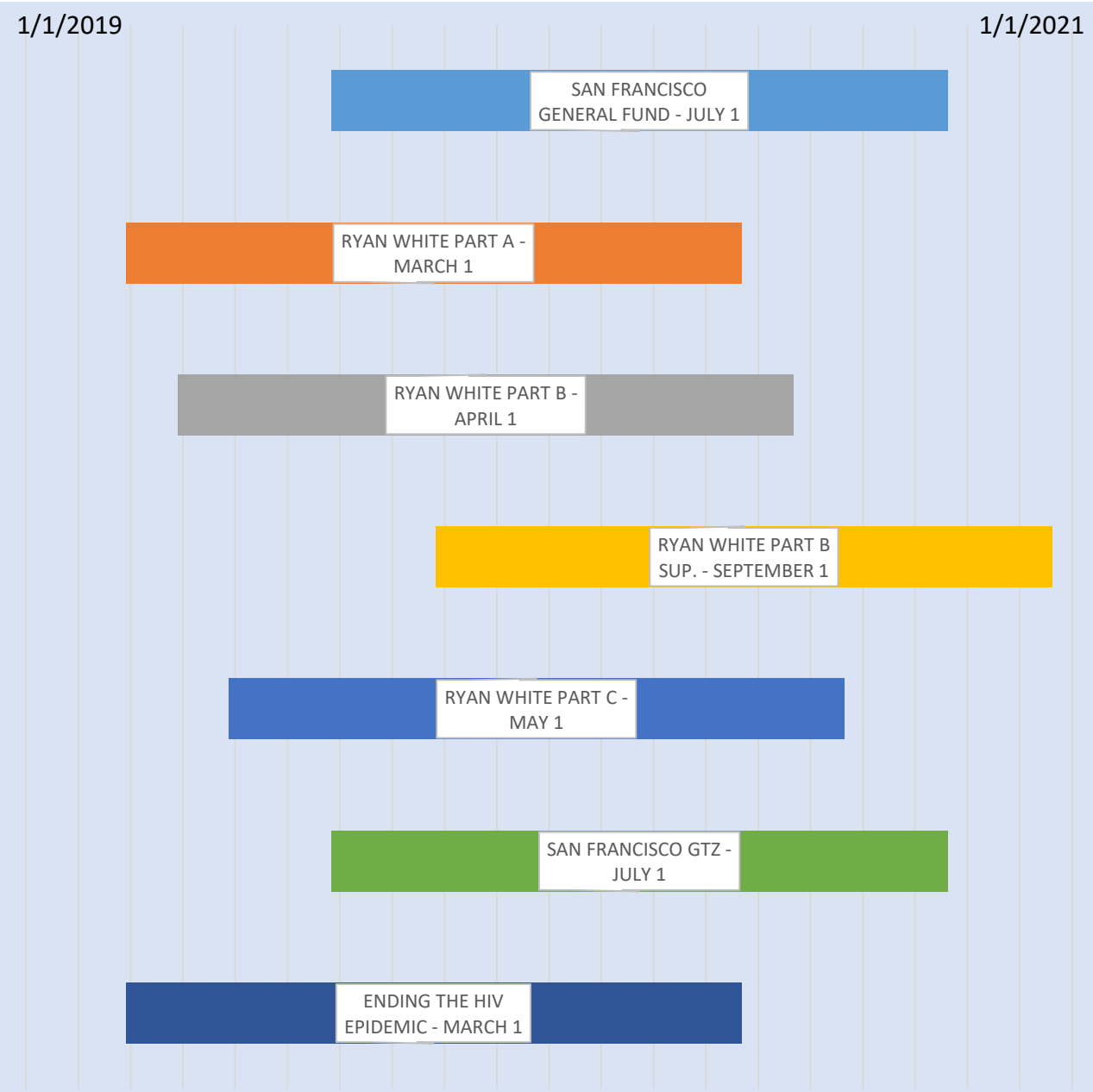


- **AIDS Legal Referral Panel**
- **Alliance Health Project**
- **Castro-Mission Health Center**
- **Catholic Charities (multiple sites)**
- **City Clinic**
- **Community Awareness & Treatment Services**
- **Dolores Street Community Services**
- **Health Right 360**
- **HIV Integrated Services**
- **Instituto Familiar de la Raza**
- **Larkin Street Youth Services**
- **Lutheran Social Services**
- **Mission Neighborhood Health Center**
- **Native American Health Center**
- **Positive Resource Center**
- **Project Open Hand / AIDS Emergency Fund**
- **Rafiki Coalition**
- **San Francisco AIDS Foundation**
- **San Francisco Community Health Center**
- **Shanti**
- **South Van Ness Behavioral Health Services**
- **Southeast Health Center**
- **St Mary's – Dignity Health**
- **Tom Waddell Urban Health Center**
- **UCSF, Men of Color Program/PCC**
- **UCSF, Positive Health Program**
- **University of Pacific, School of Dentistry**
- **Westside Community Services**

SFDPH – HIV HEALTH SERVICES – FUNDING

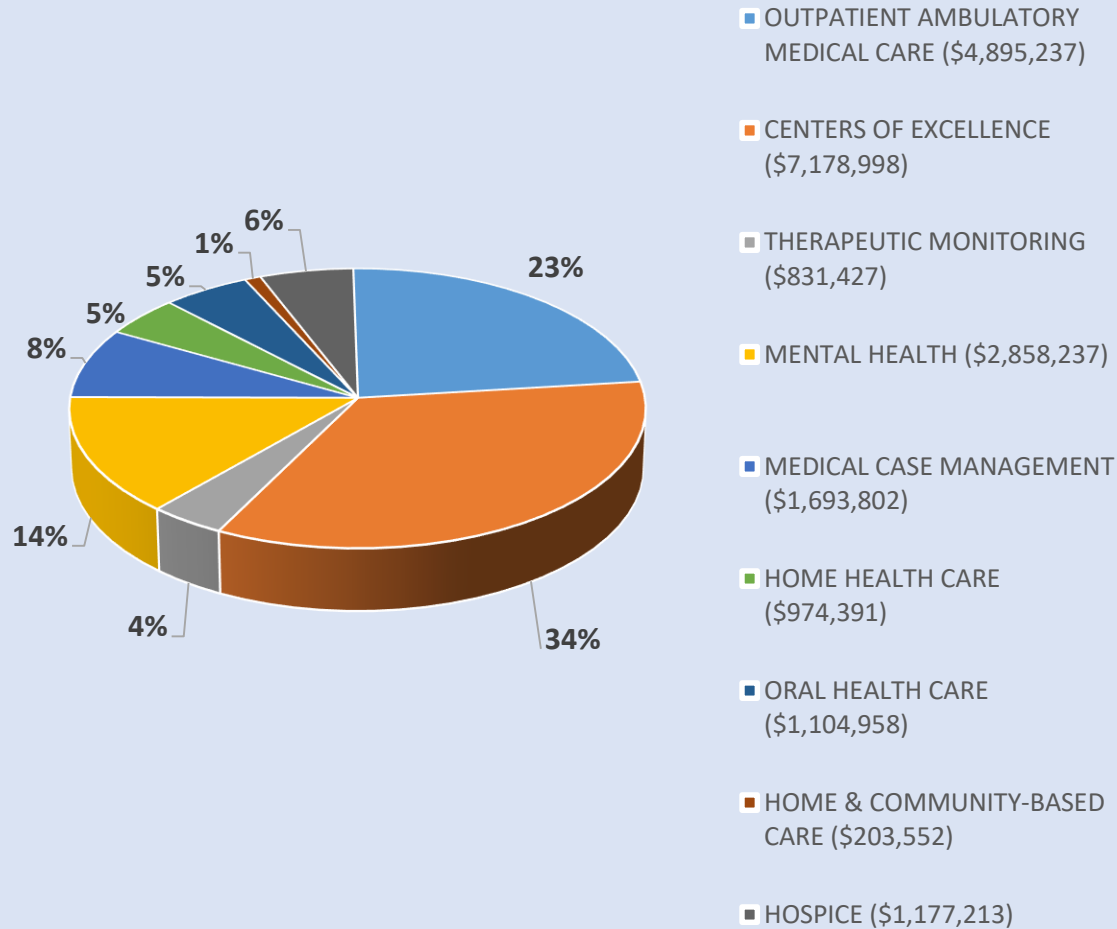


- SAN FRANCISCO GENERAL FUND
- RYAN WHITE PART A
- RYAN WHITE PART B
- RYAN WHITE PART B SUPPLEMENTAL
- RYAN WHITE PART C
- SAN FRANCISCO GETTING TO ZERO
- ENDING THE HIV EPIDEMIC (APPLICATION AMOUNT)

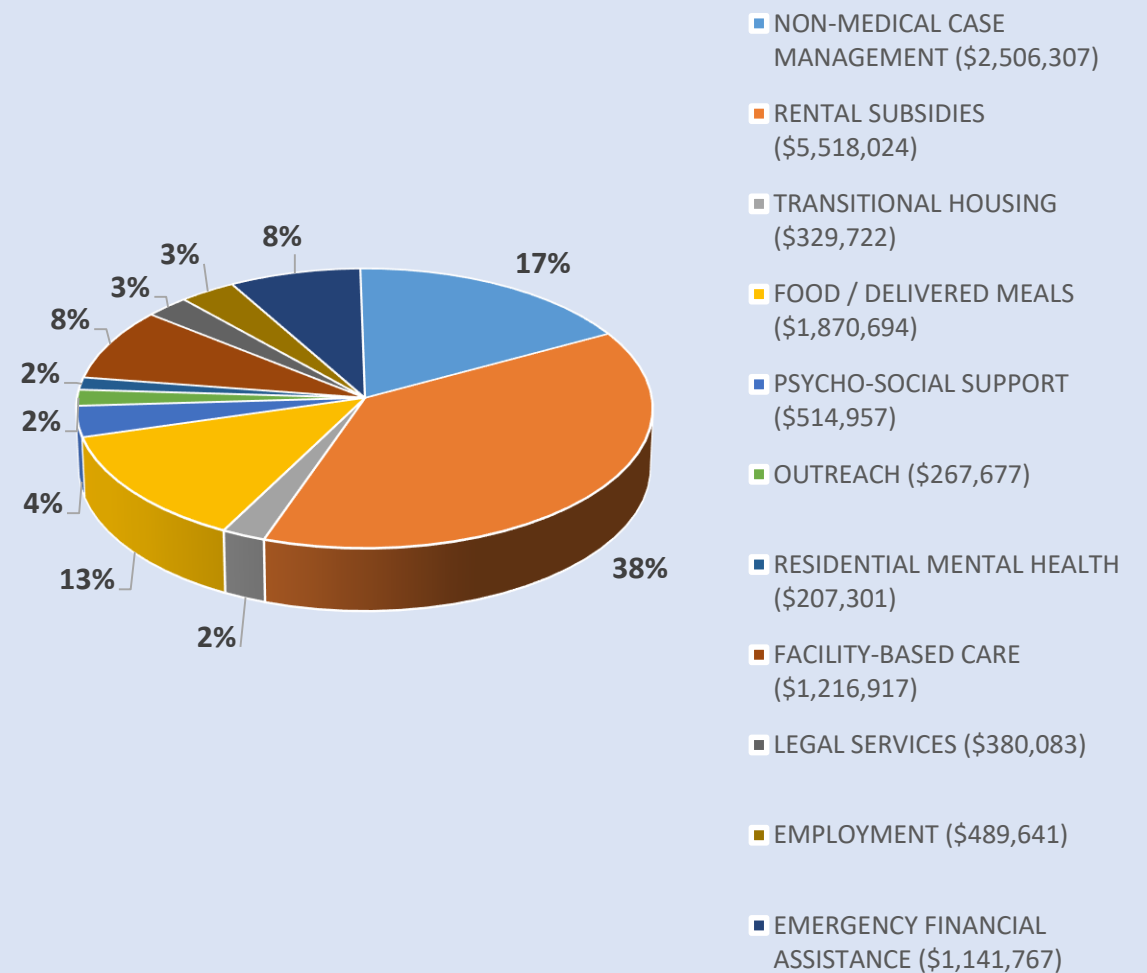


SFDPH – HIV HEALTH SERVICES – FUNDING

HHS FUNDING ALLOCATIONS BY CORE SERVICE CATEGORY



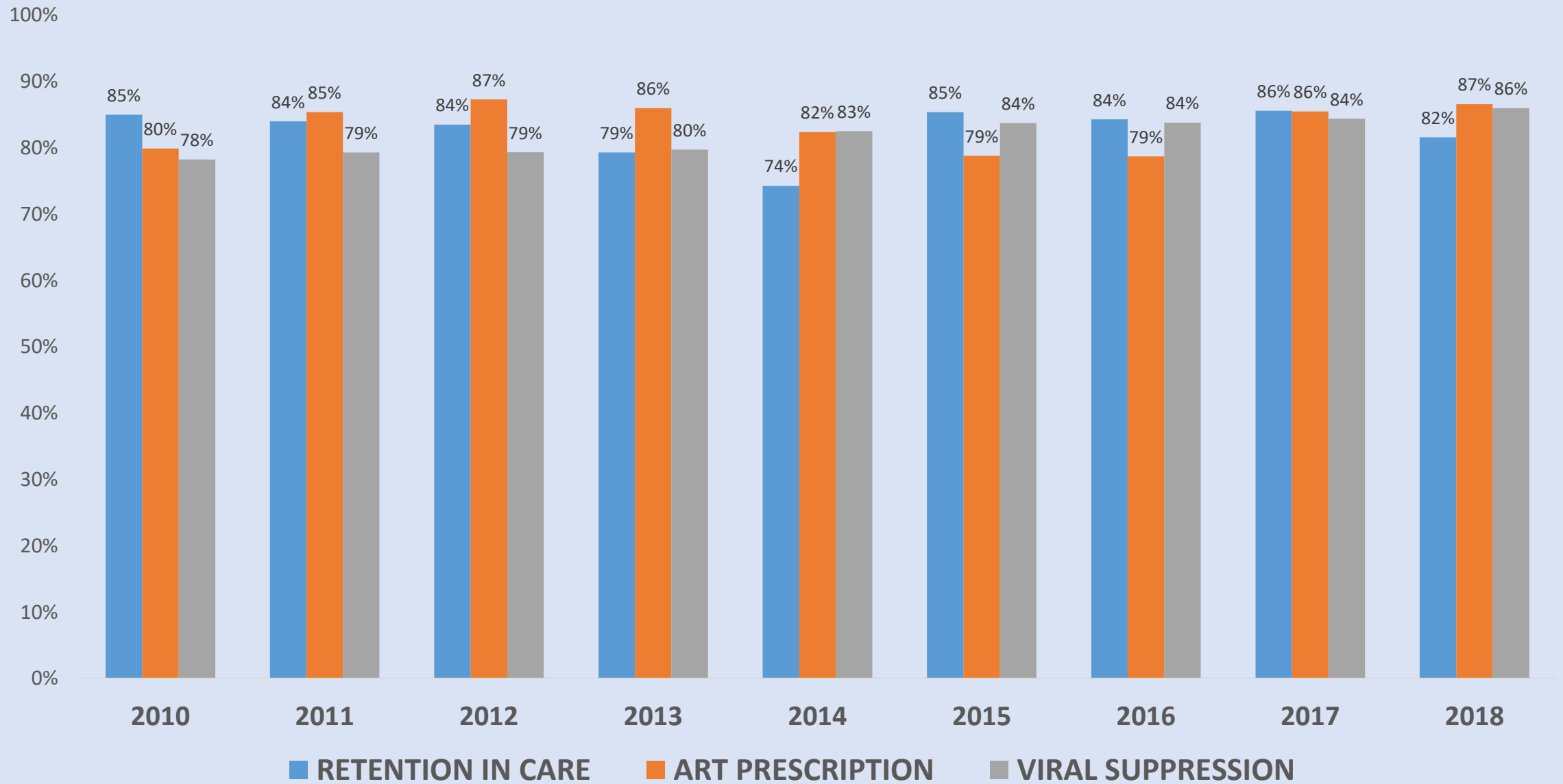
HHS FUNDING ALLOCATIONS BY SUPPORT SERVICE CATEGORY



CENTERS OF EXCELLENCE – \$7,178,988 – 34% OF CORE FUNDING

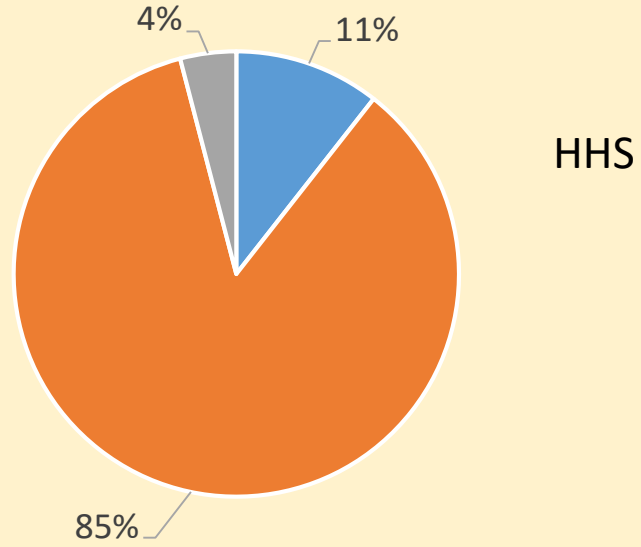
<p>Black Health Center of Excellence</p>	<p>UCSF PHP, San Francisco AIDS Foundation, UCSF 360</p>	<p>African-American men and women. Active substance users, have mental health issues, living under 150% FPL, are transgender identified, non-gay identified MSM, individuals unaware of their status, affected young people, caregivers and families</p>
<p>Chronic Care HIV/AIDS Multidisciplinary Program Center of Excellence</p>	<p>UCSF PHP, Alliance Health Project, San Francisco AIDS Foundation, UCSF DSAAM</p>	<p>Individuals who are aging, living in poverty and/or for whom mental health disorders, substance abuse, incarceration or housing status create barriers to care. Individuals with advanced disease and co-morbidities, individuals who have limited access to and/or difficulties remaining engaged in care</p>
<p>HIV Integrated Services</p>	<p>Jail Health Services</p>	<p>Men, women and transgender individuals in custody in the San Francisco City and County jail system.</p>
<p>Mission Center of Excellence</p>	<p>Mission Neighborhood Health Center, Instituto Familiar de la Raza</p>	<p>People of Color particularly Latino MSM, Latina Transgender women and their sexual partners, immigrants who are monolingual Spanish-speaking or have limited English.</p>
<p>Tenderloin Center of Excellence</p>	<p>San Francisco Community Health Center, Tom Waddell Urban Health Center</p>	<p>Homeless and marginally housed, transgender and Asian & Pacific Islander. Other populations include active substance users, those coping with mental illness, sex workers, non-English speaking and gay males and non-gay identified partners</p>
<p>Women’s Center of Excellence</p>	<p>UCSF PHP, South Van Ness Behavioral Health Services, Rita de Cascia</p>	<p>Women of color, primarily African-American, recently incarcerated, Latinas and transgender women.</p>

HHS QUALITY INDICATORS – 2010 - 2018

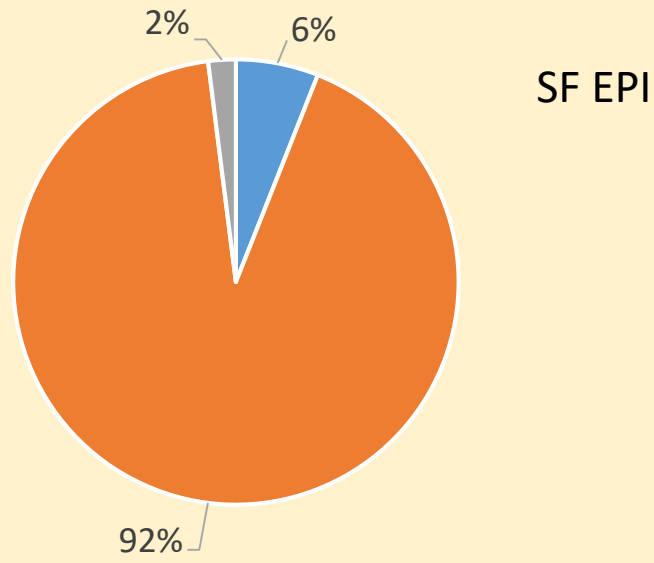


HHS/SF EPI COMPARISON – VIRAL SUPPRESSION – GENDER IDENTITY

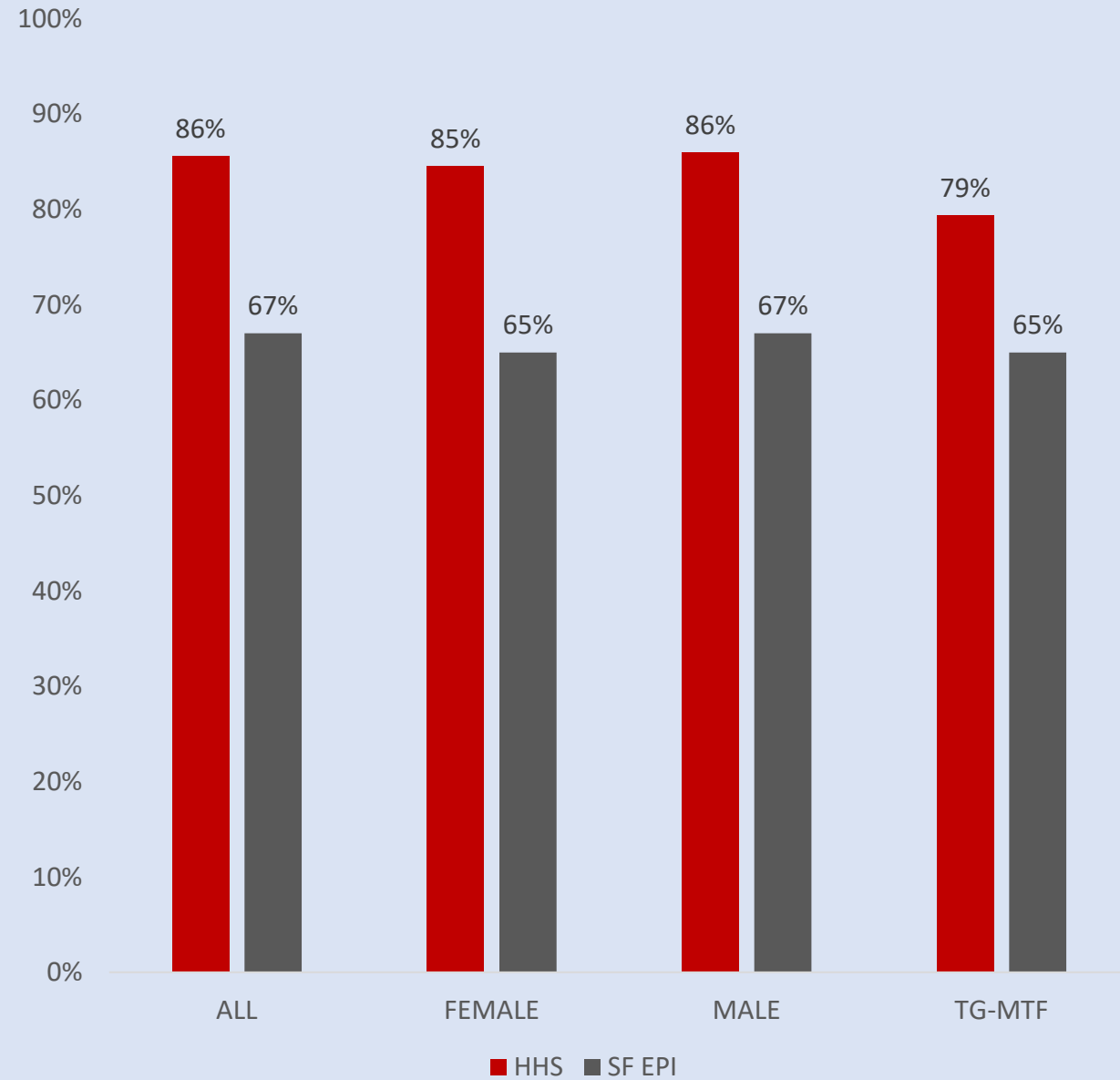
- FEMALE
- MALE
- TRANSGENDER MTF



- FEMALE
- MALE
- TRANSGENDER MTF

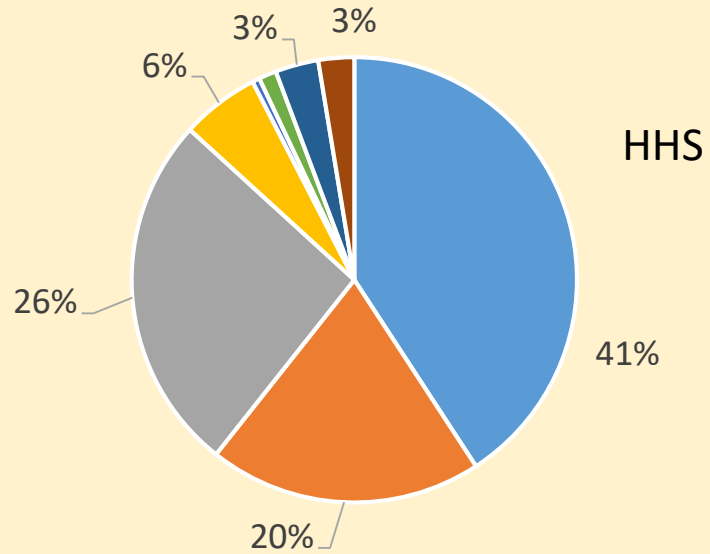


VIRAL SUPPRESSION – HHS

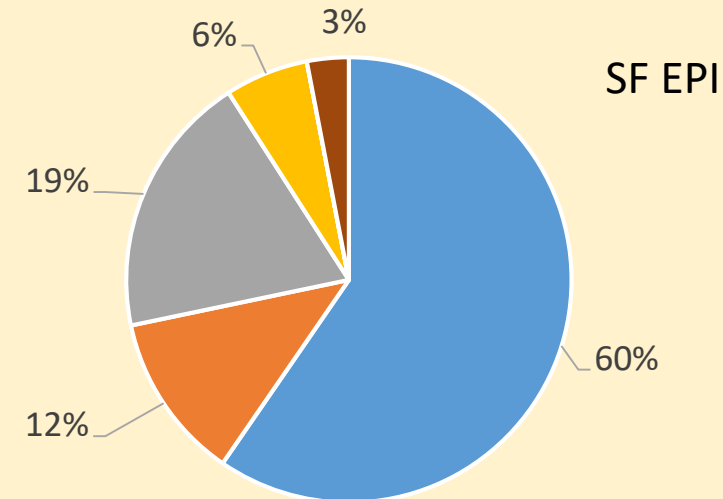


HHS/SF EPI COMPARISON – VIRAL SUPPRESSION – RACE/ETHNICITY

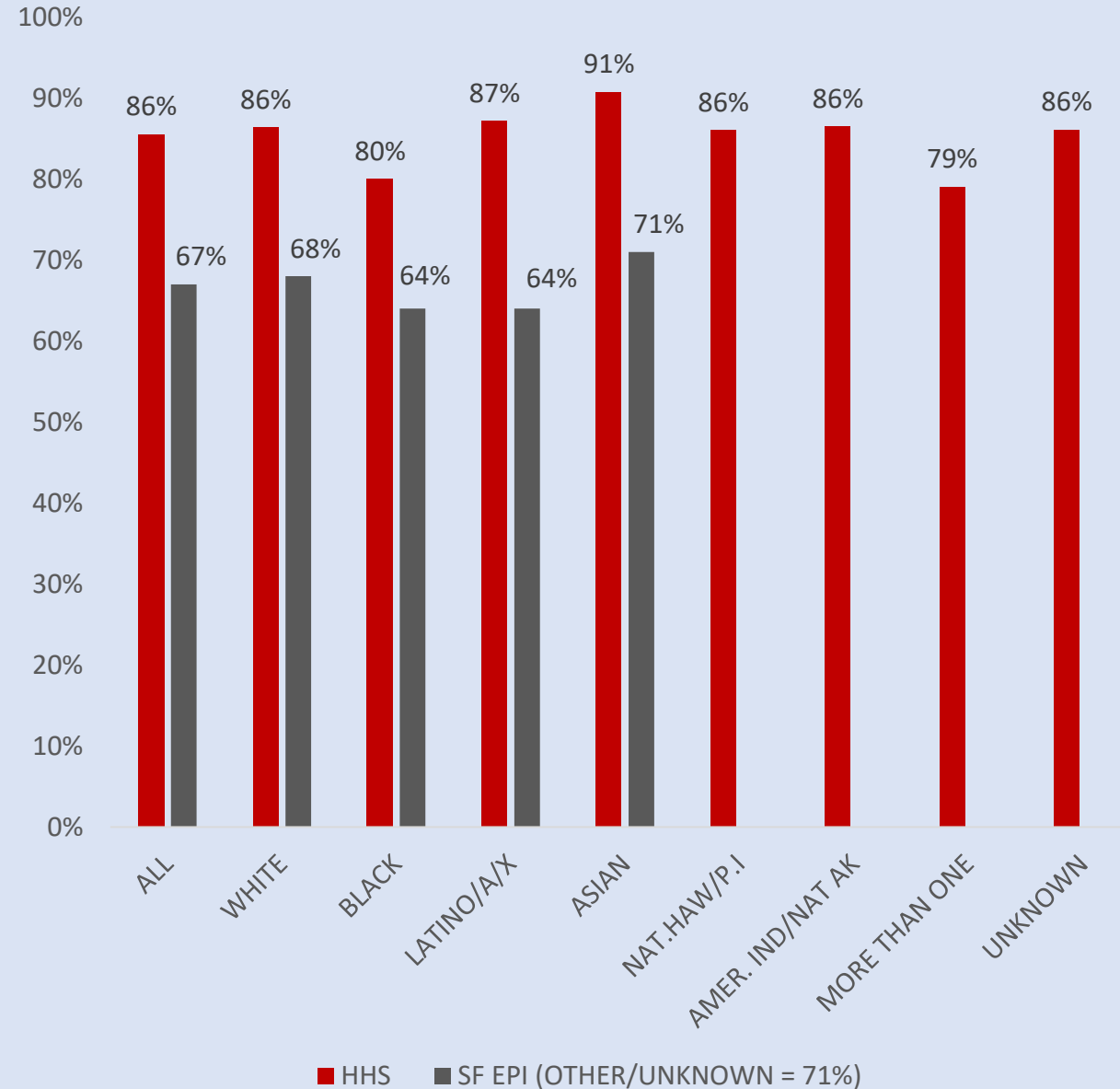
- WHITE
- BLACK
- LATINO/A/X
- ASIAN
- NAT. HAW. / PAC. ISLANDER
- AMER. INDIAN / NAT. ALASKAN
- MORE THAN ONE RACE
- UNKNOWN



- WHITE
- BLACK
- LATINO/A/X
- ASIAN
- NAT. HAW. / PAC. ISLANDER
- AMER. INDIAN / NAT. ALASKAN
- MORE THAN ONE RACE
- UNKNOWN

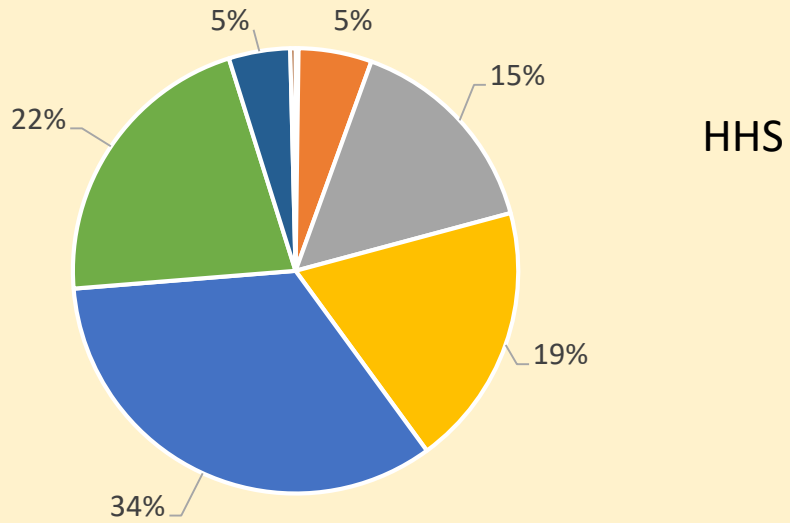


VIRAL SUPPRESSION – HHS

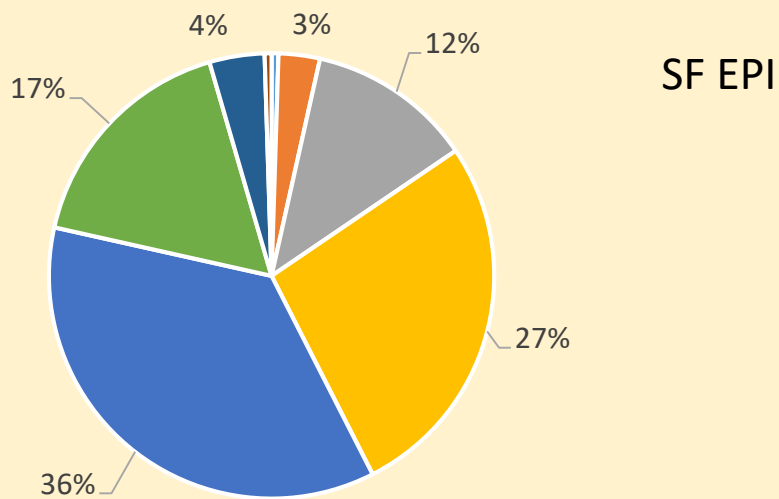


HHS/SF EPI COMPARISON – VIRAL SUPPRESSION – AGE DECADE

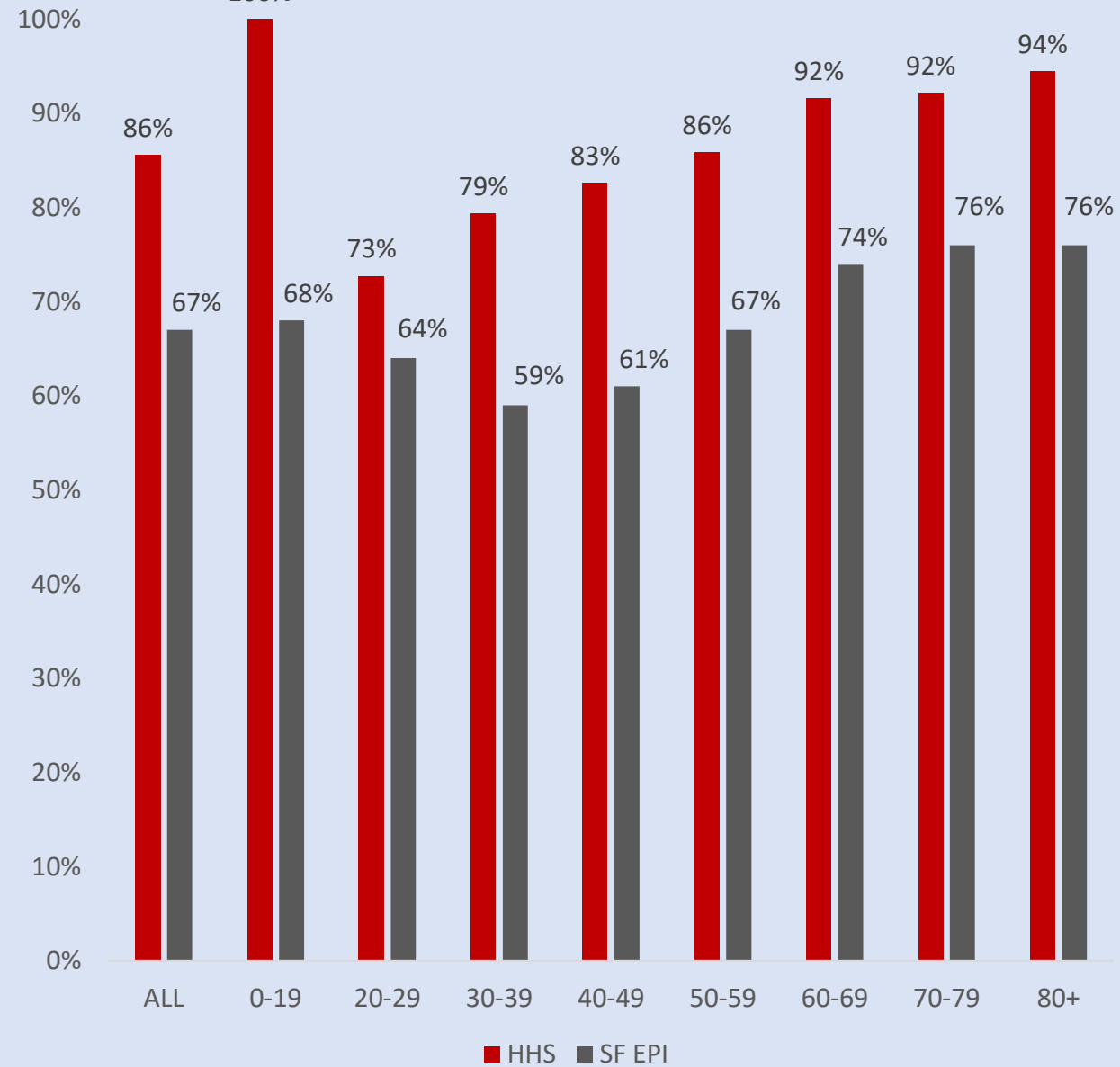
- 0-19
- 20-29
- 30-39
- 40-49
- 50-59
- 60-69
- 70-79
- 80+



- 0-19
- 20-29
- 30-39
- 40-49
- 50-59
- 60-69
- 70-79
- 80+



VIRAL SUPPRESSION – HHS

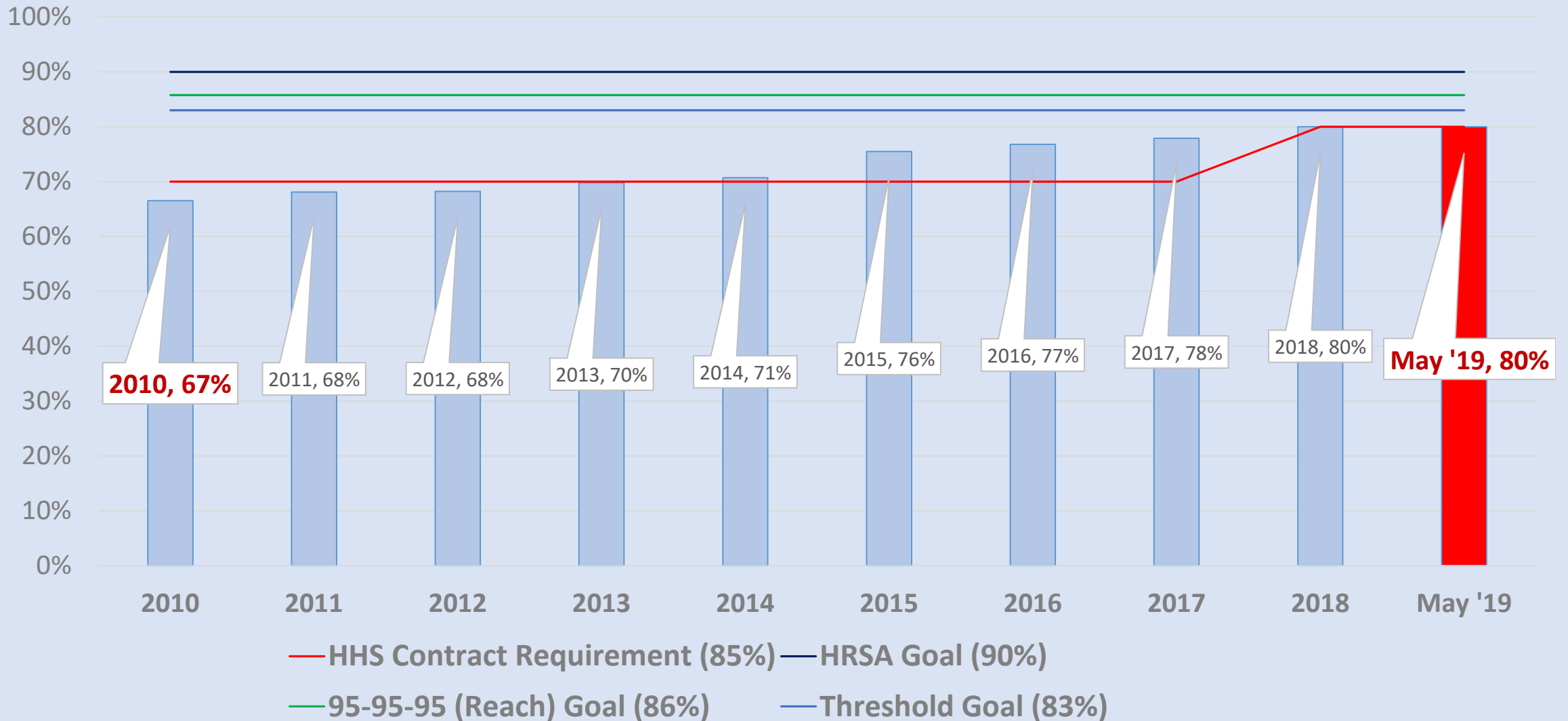


2019-21 CLINICAL QUALITY IMPROVEMENT INITIATIVE

PERFORMANCE MEASURE	IMPROVEMENT GOALS
<p>Percentage of African American patients, regardless of age, with an HIV diagnosis with an HIV viral load less than 200 copies/ml at last HIV viral load screen during the measurement year.</p>	<p>To increase the number of patients with suppressed viral loads from 80% to 86% by December 31, 2020</p>
<p>NUMERATOR:</p>	<p>BASELINE DATA</p>
<p>Number of patients in the denominator with a HIV viral load less than 200 copies/mL at last HIV viral load test during the measurement year</p>	<p>Present baseline data in terms of percent and actual numbers.</p>
<p>DENOMINATOR:</p>	<p>80% N = 1,162</p>
<p>Number of patients, regardless of age, with a diagnosis of HIV with at least one medical visit in the measurement year</p>	<p><i>Percentage (eg. 75%) of patients whose VL was suppressed for the entire measurement period and actual number (eg. 75 of 100 patients)</i></p>
<p>PATIENT EXCLUSIONS:</p>	<p>Current Baseline Data (SFDPH ARIES)</p>
<p>None</p>	<p><i>Percentage (80.0%) of patients whose VL was suppressed for the entire measurement period and actual number (930 of 1,162 patients)</i></p>

2019-21 CLINICAL QUALITY IMPROVEMENT INITIATIVE

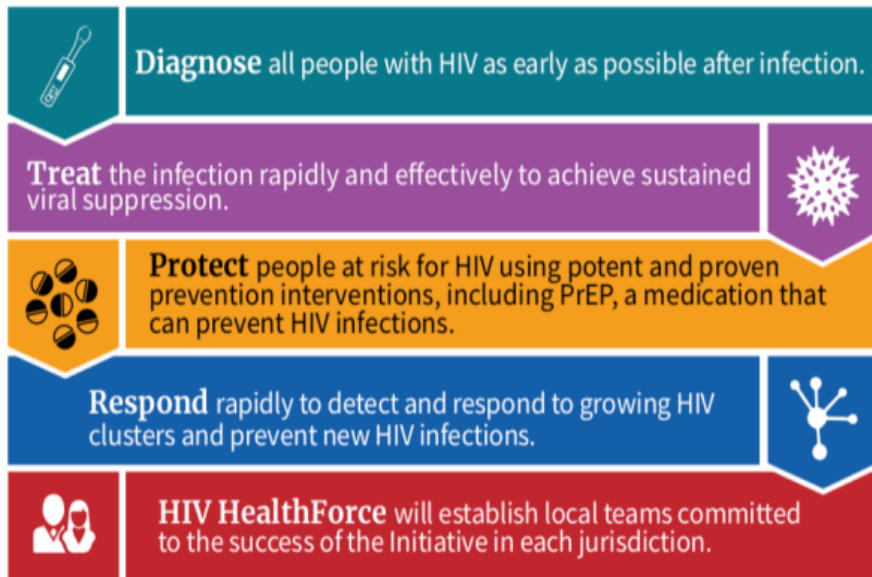
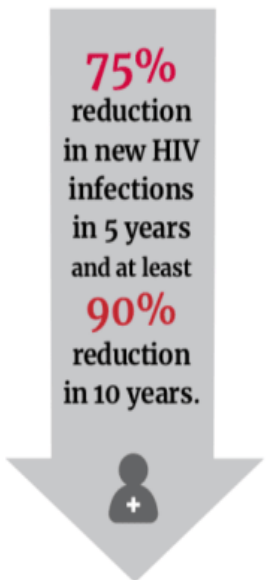
AFRICAN AMERICAN VIRAL SUPPRESSION BY YEAR – HHS



ENDING THE HIV EPIDEMIC SUMMARY

GOAL:

Our goal is ambitious and the pathway is clear – employ strategic practices in the *places* focused on the right *people* to:



August 18, 2019 – NOFO Release Date



October 15, 2019 – NOFO Due Date



March 1, 2020 – Program Start Date

\$291M FY-2020 ETHE Funding	\$170M Additional Other HIV Funding beyond ETHE
CDC - \$140M	HRSA MAI - \$54M
HRSA Ryan White - \$70M	SAMHSA MAI - \$116M
HRSA Health Clinics - \$50M	
Indian Health - \$25M	
NIH - \$6M	

The **first phase** of the **initiative** will focus on **48 counties, Washington DC, San Juan, Puerto Rico, and 7 states** with a substantial **rural HIV burden**

RWHAP PART A EMA/TGA	HIV HIGH BURDEN COUNTY
San Francisco EMA, CA	San Francisco County, CA

TIER 2
CEILING: \$ 4,000,000 / MINIMUM: \$ 750,000
San Francisco EMA, CA

HHS IS APPLYING FOR THE CEILING